

Dom7th in minor key

Educational material by Dave O'Higgins © 2021

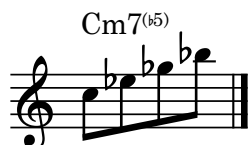
1. Minor 2-5-1 (IIIm7b5-V7b9-Im6) starting on root of IIIm7b5



2. 7th chord on 3rd



3. 7th chord on 5th



4. 7th chord on 7th



5. Chord on 3rd with descending line



6. Root to 7th with extra chromatic note



7. Chord on 5th with descending line



8. Double chromatic approach to 3rd



9. Chord on 7th with descending line (+ dble chrom app!)



10. Longer dom7 line starting on 3rd



Concert Pitch

11. Longer dom7 line starting on 5th

F7^(b13)_(b9)

Musical notation for exercise 11, showing a single staff in 4/4 time with a treble clef. The key signature has one flat (Bb). The melody starts on the 5th line (G4) and consists of 16 eighth notes: G4, Ab4, Bb4, C5, D5, Eb5, F5, G5, Ab5, Bb5, C6, D6, Eb6, F6, G6, Ab6. The piece ends with a whole rest on the 5th line.

12. Longer dom7 line starting on 7th

F7^(b13)_(b9)

Musical notation for exercise 12, showing a single staff in 4/4 time with a treble clef. The key signature has one flat (Bb). The melody starts on the 7th line (Bb5) and consists of 16 eighth notes: Bb5, C6, D6, Eb6, F6, G6, Ab6, Bb6, C7, D7, Eb7, F7, G7, Ab7, Bb7, C8. The piece ends with a whole rest on the 7th line.